

Note: This document has been translated from the Japanese original for reference purposes only.
In the event of any discrepancy between this translated document and the Japanese original, the original shall prevail.

Financial Results Briefing for the First Quarter of the Fiscal Year Ending March 31, 2026 (FY3/26) Supplementary Materials



TOKAI Corp.

Tokyo Stock Exchange Prime Market
Securities Code: 9729

Thursday, August 7, 2025

Contents

Summary of Financial Results

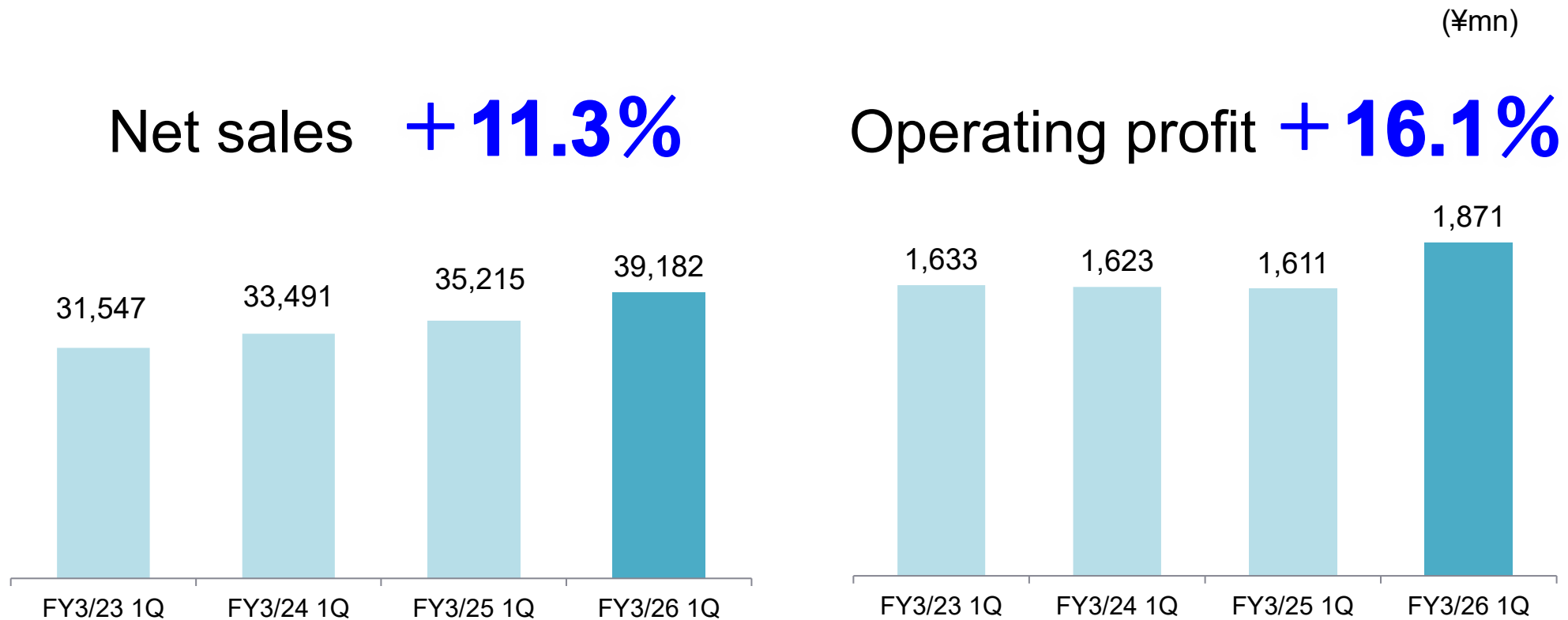
Financial Results Highlights	3
Financial Results (Consolidated Net Sales)	4
Financial Results Highlights (Consolidated Operating Profit)	5
Consolidated Profit and Loss (P/L)	6
Consolidated Financial Status (B/S)	7
Capital Investment Results	8
Topics	9

Appendix

Segments and Business Activities	11
----------------------------------	----

Financial Results Highlights

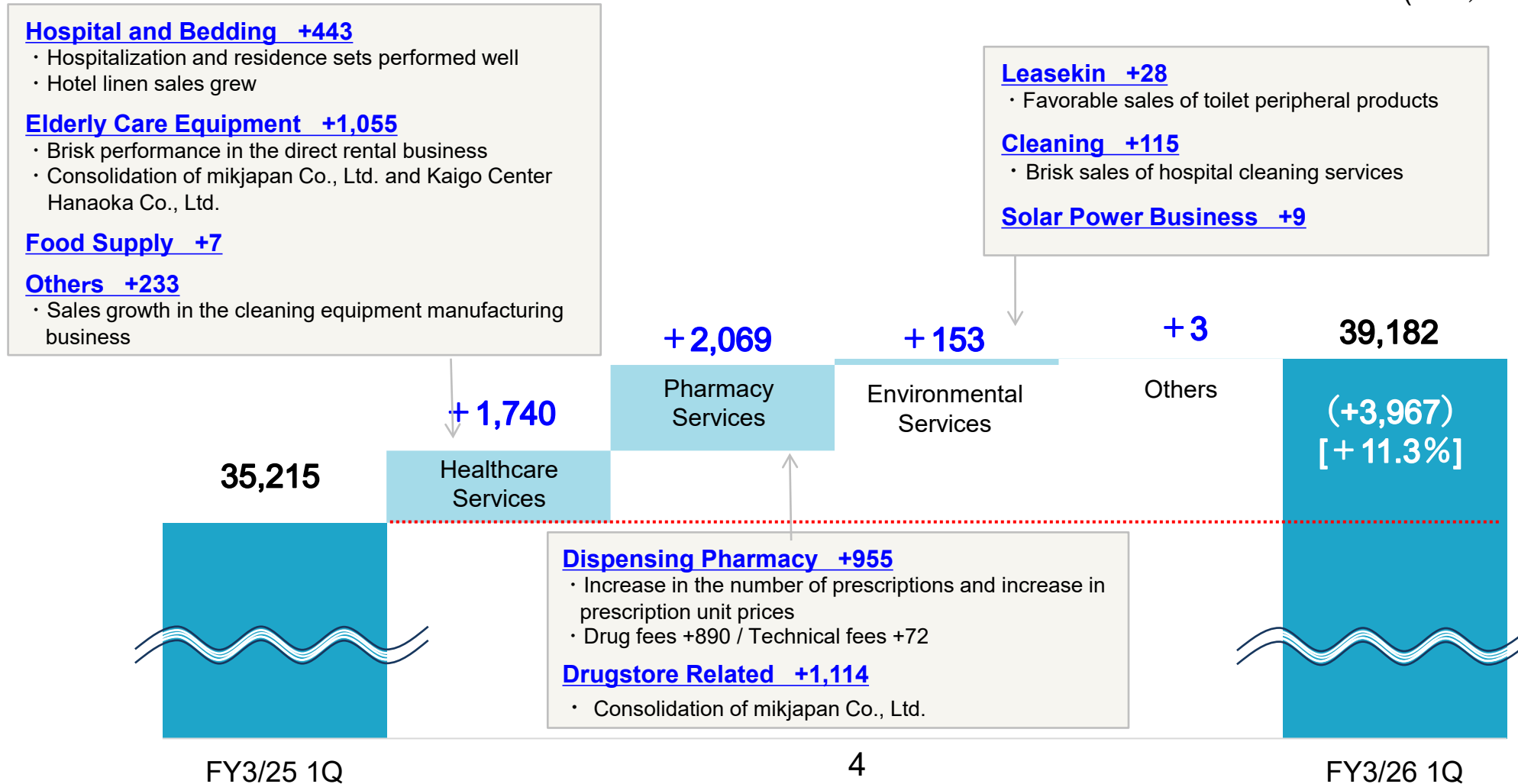
✓ Consolidated net sales increased for the fifth consecutive fiscal year and operating profit increased for the first time in three years, both reaching new record high



Financial Results Highlights (Consolidated Net Sales)

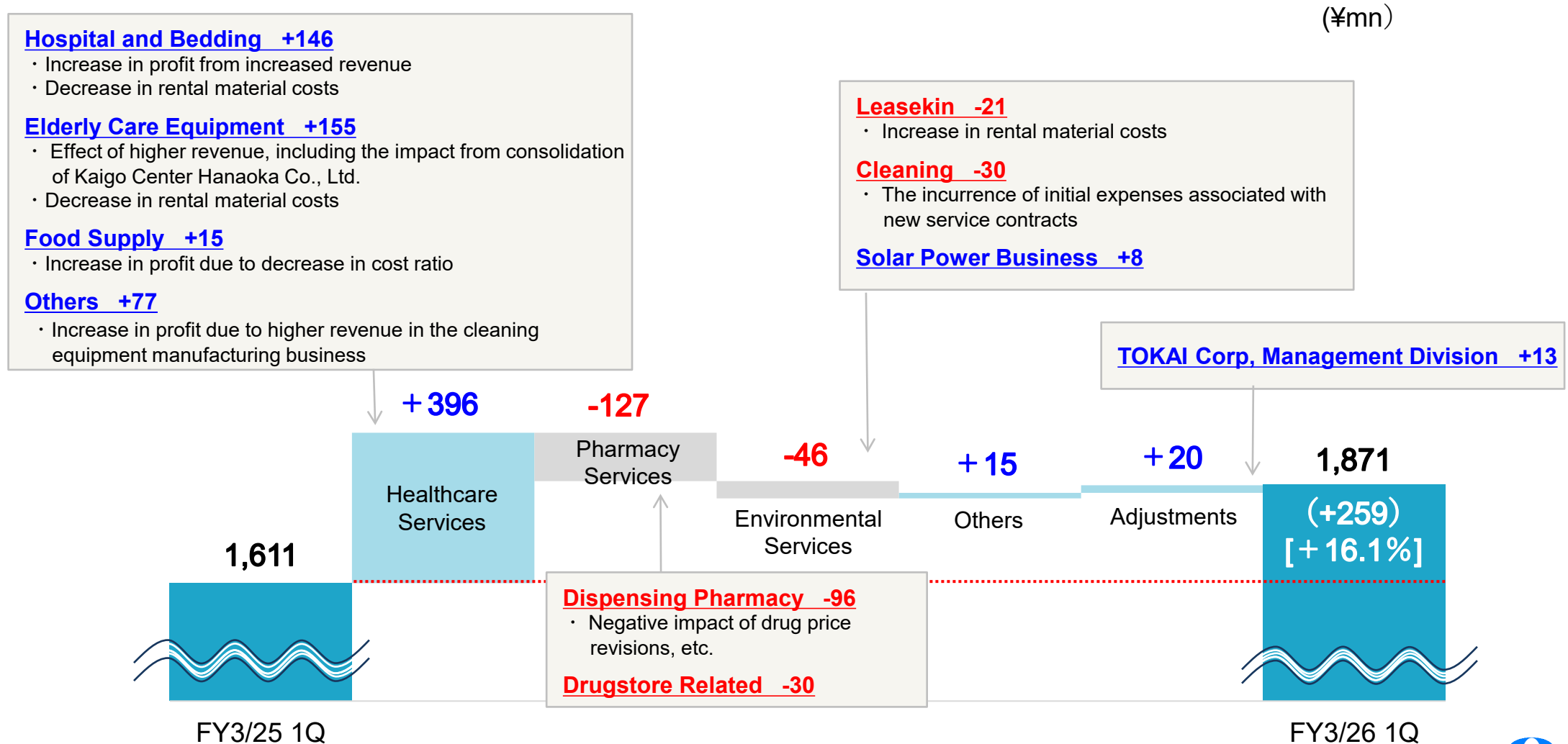
- ✓ Consolidated net sales increased year on year and **reached a record high**, mainly as the sales of the core rental business progressed favorably, along with sales growth in hotel linen and the cleaning equipment manufacturing business, as well as the contribution of sales from two companies that joined as consolidated subsidiaries during the previous fiscal year

(¥mn)



Financial Results Highlights (Consolidated Operating Profit)

- ✓ Consolidated operating profit marked a **new record high** as profit increased year on year, mainly due to higher revenue in Healthcare Services, despite cost increases in Pharmacy Services and Environmental Services



Consolidated Profit and Loss (P/L)

(¥mn)

	FY3/24 1Q	FY3/25 1Q	FY3/26 1Q	Change	Change %
Net sales	33,491	35,215	39,182	+3,967	+11.3%
Healthcare Services	17,344	18,517	20,258	+1,740	+9.4%
Pharmacy Services	12,486	13,109	15,179	+2,069	+15.8%
Environmental Services	3,617	3,546	3,700	+153	+4.3%
Others	42	41	44	+3	+7.4%
Operating profit	1,623	1,611	1,871	+259	+16.1%
Healthcare Services	1,345	1,454	1,850	+396	+27.2%
Pharmacy Services	578	472	345	-127	-26.9%
Environmental Services	328	356	310	-46	-13.0%
Others	-5	-14	1	+15	—
Adjustments	-623	-657	-637	+20	—
Ordinary profit	1,755	1,825	2,050	+224	+12.3%
Profit attributable to owners of parent	1,238	1,717	1,345	-371	-21.7%

Consolidated Financial Status (B/S)

(¥mn)

	FY3/25	FY3/26 1Q	Change
Current assets	56,311	56,028	-282
Non-current assets	57,640	58,017	+377
Total assets	113,951	114,045	+94
Current liabilities	23,153	22,367	-786
Non-current liabilities	4,952	5,219	+267
Total liabilities	28,105	27,587	-518
Total net assets	85,845	86,458	+612
Total of liabilities and net assets	113,951	114,045	+94
Equity ratio	74.8%	75.2%	+ 0.4P

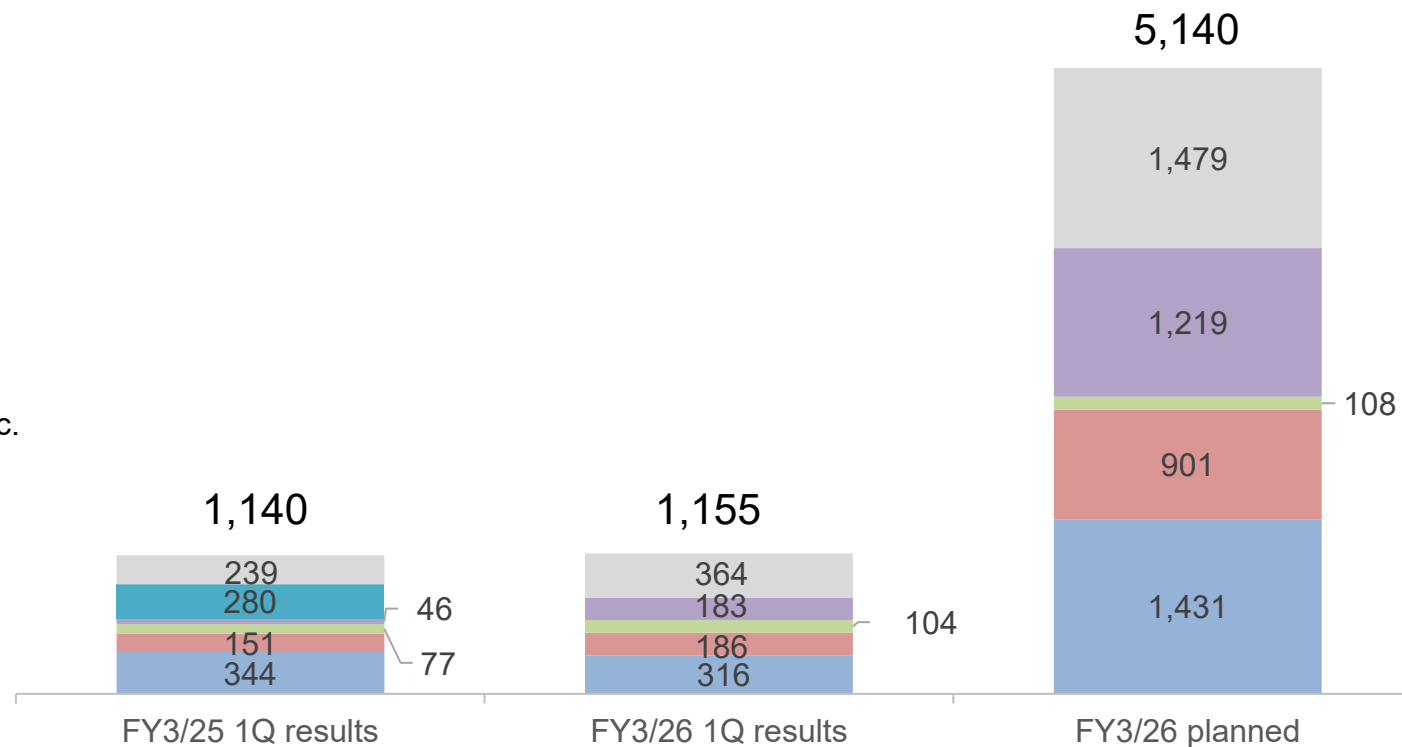
Capital Investment Results

(¥mn)

	FY3/25 1Q	FY3/26 1Q		FY3/26 (planned)	
			Change		Change %
Capital investments	1,140	1,155	+14	+1.3%	5,140
Depreciation	1,187	1,148	-38	-3.2%	5,035

(Breakdown of capital investments)

- Others
- Plant construction expenses
- System-related
- New store opening expenses, etc.
- Plant equipment, etc.
- Rental materials



Topics

Acceleration of New Store Openings in the Elderly Care Equipment Business (Elderly Care Equipment Rental and Rehabilitation-Type Daycare Services)

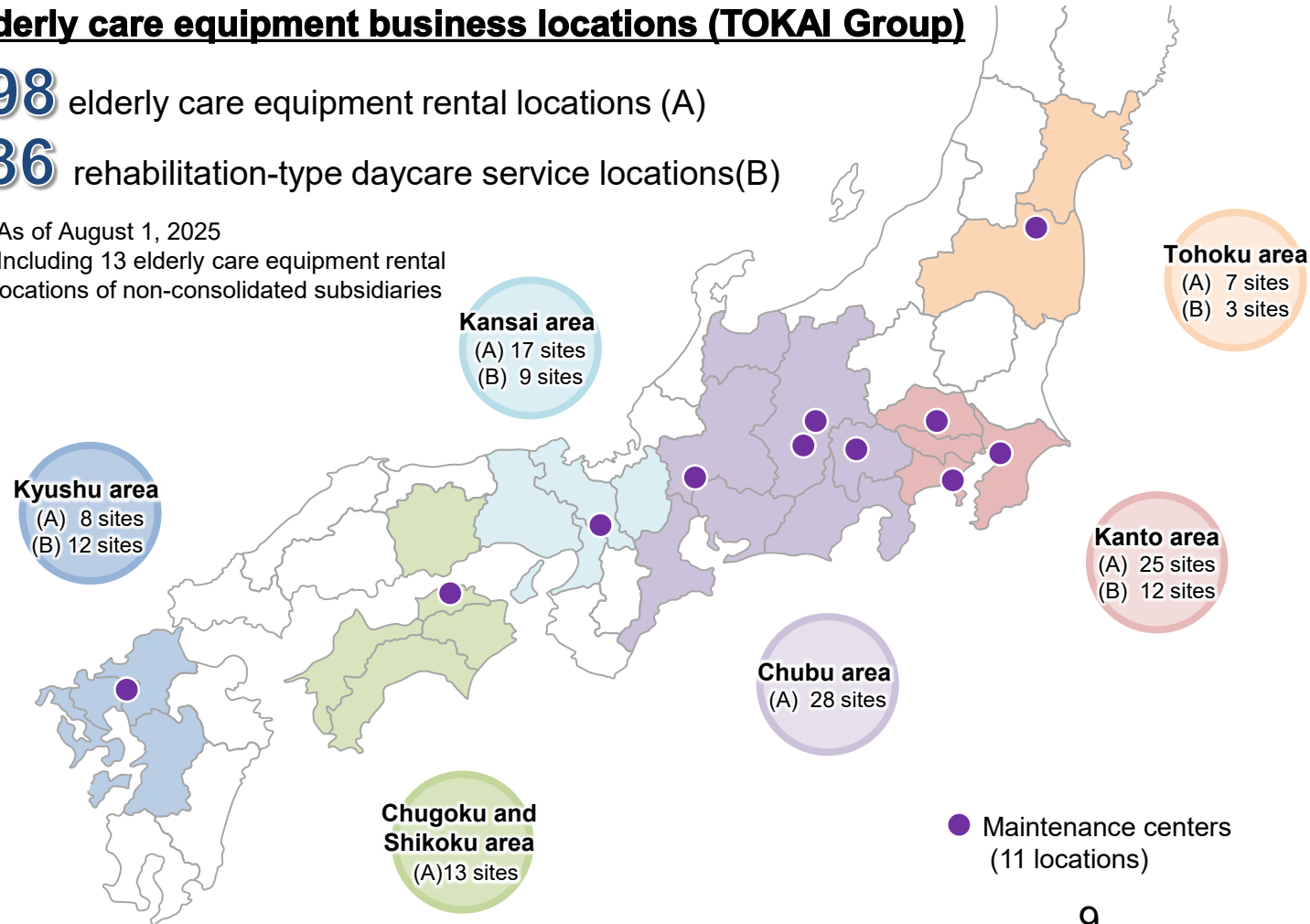
Elderly care equipment business locations (TOKAI Group)

98 elderly care equipment rental locations (A)

36 rehabilitation-type daycare service locations(B)

* As of August 1, 2025

* Including 13 elderly care equipment rental locations of non-consolidated subsidiaries



Store-opening status for the current fiscal year (April 2025 onward)

Elderly care equipment rental	
April	Itabashi Sales Office (Tokyo)
July	Kyushu Central Sales Office (Saga Pref.)
August	Ichinomiya Sales Office (Aichi Pref.)
Rehabilitation-type daycare services	
April	Mik Kenko-no-Mori Yao (Osaka Pref.)
July	Mik Kenko-no-Mori Yanase (Fukuoka Pref.)
August	Mik Kenko-no-Mori Ibaraki (Osaka Pref.)

Ichinomiya Sales Office (From August 1)

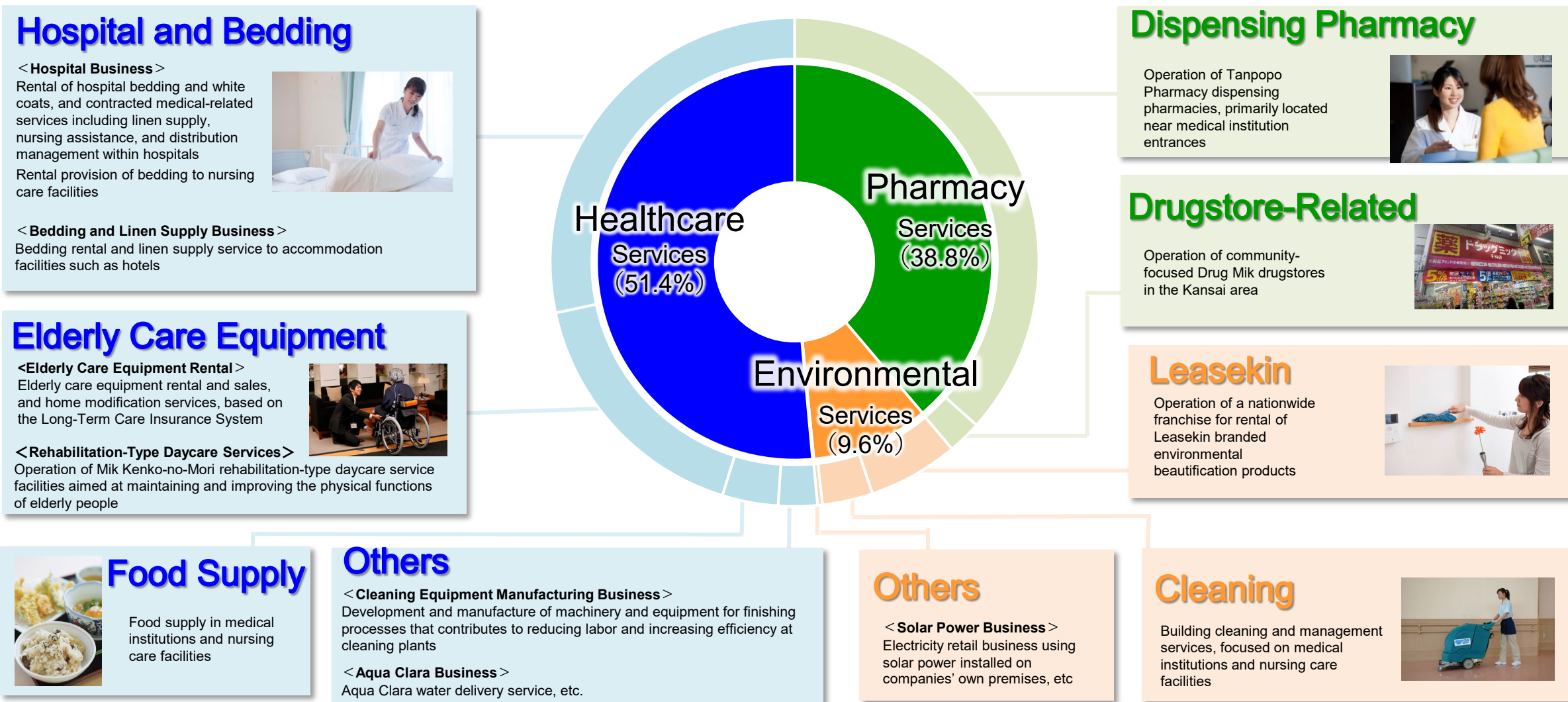
Opening Ichinomiya Sales Office
inside Tanpopo Pharmacy Ichinomiya Store



Aiming to create synergies with Tanpopo Pharmacy

Appendix

Segment Composition and Overview of Business



* Segment Composition indicates the percentage of FY3/25 consolidated net sales.
 * In addition to the above, there are also businesses not included among reporting Segments.

For inquiries regarding these materials and other IR matters:

**Corporate Planning and IR Section,
Corporate Planning Department,
Finance & Corporate Planning Division**

E - mail: ir_info@tokai-corp.com

Caution Regarding Forecasts

These materials contain predictions and forecasts regarding the future. These reflect the judgment of the Company based on information currently available, and they include potential risks and uncertainties. Therefore, please understand that changes in various factors could cause the actual results to be different from the forecasts herein.