



January 27, 2025

Company name Mitsubishi Shokuhin Co., Ltd.  
Representative Yutaka Kyoya,  
Representative Director  
Code Number 7451, TSE Standard  
Contact Makoto Iwano, Group Manager,  
Corporate Communications &  
Brand Management Group  
TEL +81-3-4553-5111

### **Notice of Reorganization and Changes of Officers**

Mitsubishi Shokuhin (hereinafter “MS”) announces that a meeting of its Board of Directors held today has resolved the following reorganization and changes of directors, audit & supervisory board members, executive officers, and other personnel which will be effective on April 1, 2025. The new appointments and reappointments of directors and audit & supervisory board members will be officially decided at the annual shareholders' meeting scheduled for June 23, 2025, and at the Board of Directors' meeting and Audit & Supervisory Board to be held after the shareholders' meeting.

#### **1. Background and Aims of Reorganization**

In order to accelerate “Utilizing digital technologies” and “Capturing new demand” which are our strategy for Growth under the new Mid-Term business plan “MS Vision 2030,” we have decided to implement following reorganization.

#### **2. Key Points of Reorganization**

##### **(1) Appointment of COO, Marketing Development**

We appoint new COO in charge of Marketing Development Division which had been under the COO, Next Generation Business since 2023.

##### **(2) Appointment of COO, CVS**

We appoint new COO in charge of CVS Division.

##### **(3) Reorganization of National Distribution Division**

We divide National Distribution Division into two divisions, National Distribution Division and Strategic Market Division.

(4) Dissolution of Logistics Operation Division

We dissolve Logistics Operation Division and transfer its business and personnel to newly established subsidiary, Best Logistics Partners Inc.

3. Personnel Changes of Board Members

(1) New appointment (to assume on June 23, 2025)

Director: Wataru Kato

Audit & Supervisory Board Member: Takeshi Ohara , Takahiko Matsubara

(2) Retirement (scheduled to retire on June 23, 2025)

Director: Koichi Enomoto

Audit & Supervisory Board Member: Koki Yamakawa, Eiji Unakami

(3) Reappointment (to be reappointed on June 23, 2025)

Representative Director: Yutaka Kyoya

Director: Koji Tamura, Hirohide Hosoda, Hiroshi Kawamoto

Director (part-time): Kazuo Ito, Tamaki Kakizaki, Masahiro Yoshikawa, Kimiko Kunimasa, Hiroko Kawasaki

Note: Tamaki Kakizaki, Masahiro Yoshikawa, Kimiko Kunimasa and Hiroko Kawasaki are an independent officer under the provisions of the Tokyo Stock Exchange.

4. Personnel Changes of Executive officers

(1) New appointment (As of April 1, 2025)

Name	New	Present
Takuro Kubota	Executive Officer, Division COO, National Distribution Division	Division COO, National Distribution Division
Yoshifumi Kobayashi	Executive Officer, Division COO, NC Division	Division COO, NC Division
Yutaka Shiraishi	Executive Officer, Division COO, Logistics Division	Group Manager, Distribution DX Promotion Office, in charge of SCM
Hiroataka Nishiyama	Executive Officer, Senior Assistant to Chief Operating Officer, Corporate Staff Section, (Concurrently) Group Manager, Corporate Administration Office	Senior Assistant to Chief Operating Officer, Corporate Staff Section, (Concurrently) Group Manager, Corporate Administration Office

(2) Promotion (As of April 1, 2025)

Name	New	Present
Tsutomu Yamaguchi	Managing Executive Officer, in charge of National, 2	Executive Officer, General Manager, Chubu Branch
Tatsuhisa Yokoyama	Managing Executive Officer, in charge of Eastern Japan	Executive Officer, General Manager, Tokyo Metropolitan Area Branch
Tatsuya Sato	Managing Executive Officer, in charge of National, 1	Executive Officer, Division COO, Food Service Division
Tomoharu Ishizaki	Managing Executive Officer, in charge of IT/Digital Strategy, (Concurrently) Division COO, Digital Solutions Division, (Concurrently) Chief Information Officer	Executive Officer, Chief Information Officer, (Concurrently) Division COO, Digital Solutions Division
Hiroshi Koyama	Managing Executive Officer, in charge of Marketing Development, (Concurrently) Division COO, Marketing Development Division	Executive Officer, Division COO, Marketing Development Division

(3) Retirement (As of March 31, 2025)

Managing Executive Officer: Koichi Enomoto, Osamu Kawakami, Masaki Yamamoto,  
Kenjiro Takeshima

Executive Officer: Kunio Ebashi, Naoki Shimoyama

Note: Kunio Ebashi will continue to work at our company as “Assistant to Division COO, LIFENET Division” and Naoki Shimoyama will continue to work at our company as “Assistant to Division COO, SCM Support Division” after April 1, 2025.

(4) Reappointment (As of April 1, 2025)

President and Chief Executive Officer: Yutaka Kyoya

Managing Executive Officer: Koji Tamura, Hirohide Hosoda, Hiroshi Kawamoto,  
Wataru Kato, Takayuki Yamane, Hiroshi Uemura,  
Ken Yamaguchi

Executive Officer:

Yasushi Watanabe, Ichiro Satsuka,  
Toshiyuki Suganuma, Noboru Tachime,  
Katsuo Uchiyama, Yoji Miyamura, Yuichiro Nakamura,  
Takashi Ito, Koji Kotani

5. Related Personnel Changes (As of April 1, 2025)

Name	New	Present
Takayuki Yamane	Managing Executive Officer, Chief Operating Officer, Corporate Staff Section, Corporate Planning	Managing Executive Officer, in charge of National, 1
Kenichi Otomo	Division COO, Business Planning and Coordination Division	Group Manager, Trade Support Office, Business Planning and Coordination Division
Ken Yamaguchi	Managing Executive Officer, Chief Operating Officer, Corporate Staff Section, Corporate Administration, Legal, Human Resources & Compliance, (Concurrently) Chief Human Resource Officer, (Concurrently) Chief Health Officer	Managing Executive Officer, Chief Operating Officer, Corporate Staff Section, Corporate Planning
Yasushi Watanabe	Executive Officer, Senior Assistant to Chief Operating Officer, Corporate Staff Section, Corporate Administration & Governance	Executive Officer, Group Manager, Corporate Governance Group
Koji Tamura	Director, (Concurrently) Managing Executive Officer, in charge of SCM, (Concurrently) Chief Logistics Officer	Director, (Concurrently) Managing Executive Officer, in charge of SCM
Koji Kotani	Executive Officer, Seconded to Best Logistics Partners Inc. (President and Representative Director)	Executive Officer, Group Manager, SCM Integration Office

Yoji Miyamura	Executive Officer, Division COO, SCM Support Division	Executive Officer, Division COO, Logistics Division
Yuichiro Nakamura	Executive Officer, In charge of CVS, (Concurrently) Division COO, CVS Division	Executive Officer, Division COO, CVS Division
Takashi Ito	Executive Officer, General Manager, Tokyo Metropolitan Area Branch	Executive Officer, Division COO, Business Planning and Coordination Division
Shinichi Shinozaki	General Manager, Chubu Branch	Group Manager, Strategic Planning Office, Chubu Branch
Motoyuki Sakagami	Division COO, Food Service Division	Group Manager, Strategic Planning Office, Kansai Branch
Atsushi Minato	Division COO, LIFENET Division	Group Manager, Strategic Planning Office, Chushikoku Branch
Yasutaka Tanaka	Division COO, Strategic Market Division	Group Manager, Strategic Planning Office, National Distribution Division
Hirokazu Ebata	Division COO, Domestic Products Development Division	Group Manager, Strategic Planning Office, Domestic Products Development Division / Imported Products Development Division
Hiroaki Morikawa	Deputy in charge of Next Generation Business, Business Planning	Division COO, Domestic Products Development Division

Note: To clarify the responsibility for formulating logistics strategies in line with the business strategy and for optimizing and improving the productivity of the entire supply chain, a Chief Logistics Officer will be created effective April 1, 2025.

<Attachments>

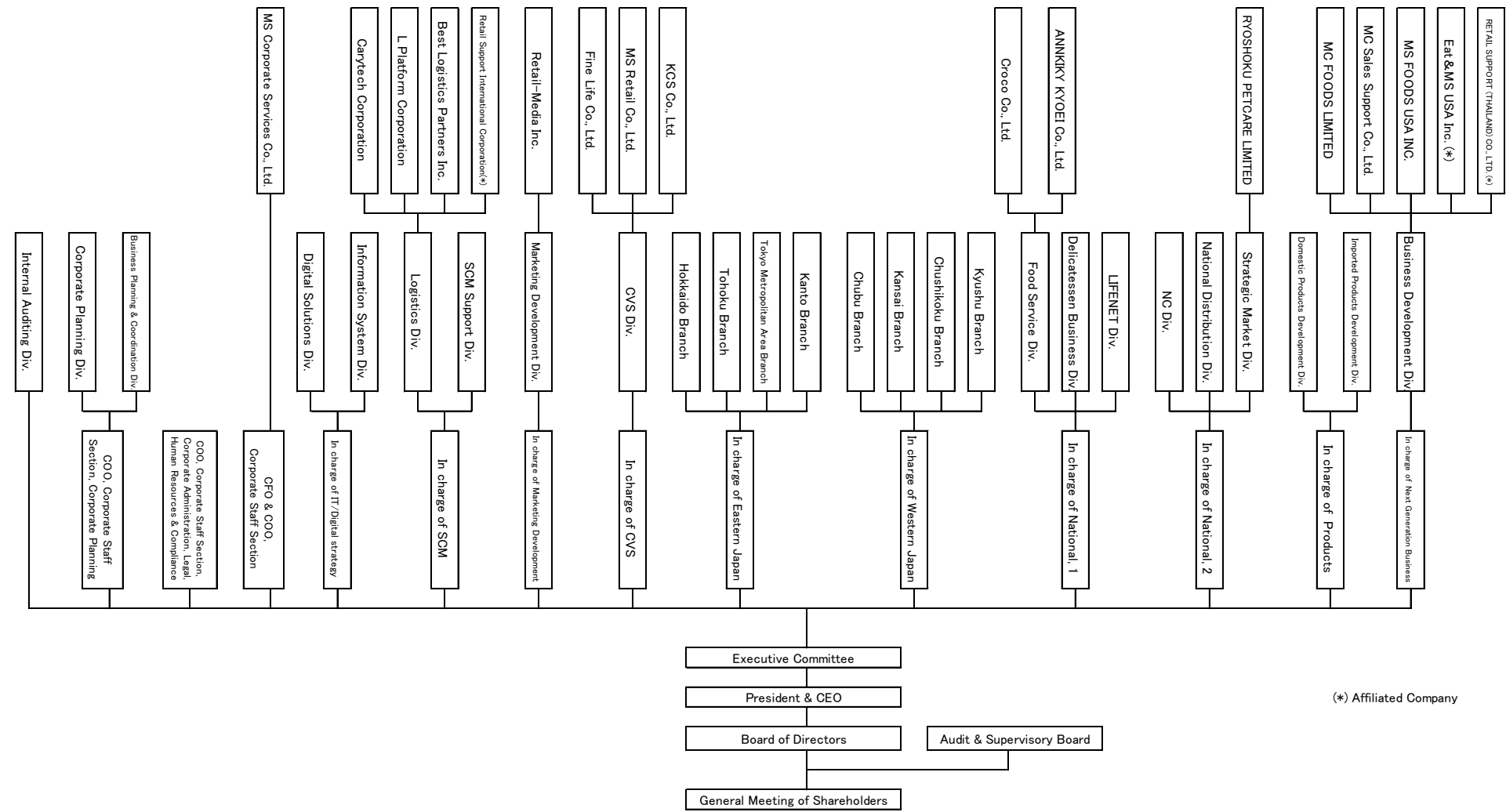
1. Organization Chart (Summary) (As of April 1, 2025)
2. Board Members (As of June 23, 2025)
3. Executive Officers (As of April 1, 2025)

End

Disclaimer: This document has been translated from the Japanese original for reference purposes only. In the event of any discrepancy between this translated document and the Japanese original, the original shall prevail.

Attachment 1

Organization Chart (Summary) (As of April 1, 2025)



(\*) Affiliated Company

## Attachment 2

Board Members (As of June 23, 2025)

(Classification: ○: reappointment, ●: new appointment)

(Directors 10 Persons, Audit & Supervisory 4 Persons, Total 14 Persons)

	Name	Classification	Position and responsibilities
Representative Director	Yutaka Kyoya	○	President, (Concurrently) Chief Sustainability Officer
Director	Koji Tamura	○	In charge of SCM, (Concurrently) Chief Logistics Officer
Director	Hirohide Hosoda	○	In charge of Products
Director	Hiroshi Kawamoto	○	Chief Financial Officer, Chief Operating Officer, Corporate Staff Section
Director	Wataru Kato	●	In charge of Next Generation Business
Director	Kazuo Ito	○	Senior Vice President, Division COO, Logistics & Food Distribution Division, Mitsubishi Corporation
Outside Director	Tamaki Kakizaki	○	Professor, School of Law, Meiji University
Outside Director	Masahiro Yoshikawa	○	
Outside Director	Kimiko Kunimasa	○	
Outside Director	Hiroko Kawasaki	○	
full-time Audit & Supervisory Board Member [Outside]	Takeshi Ohara	●	
full-time Audit & Supervisory Board Member	Takahiko Matsubara	●	
Audit & Supervisory Board Member [Outside]	Yoshiharu Ojima		Attorney at law, IKEDA & SOMEYA
Audit & Supervisory Board Member	Eiji Yoshikawa		General Manager, Smart-Life Creation Administration Dept, Mitsubishi Corporation



### Attachment 3

Executive Officers (As of April 1, 2025)

(Total 26 Persons)

	Name	Responsibilities
President and Chief Executive Officer	Yutaka Kyoya	President, (Concurrently) Chief Sustainability Officer
Managing Executive Officer	Koji Tamura	In charge of SCM, (Concurrently) Chief Logistics Officer
Managing Executive Officer	Hirohide Hosoda	In charge of Products
Managing Executive Officer	Hiroshi Kawamoto	Chief Financial Officer, Chief Operating Officer, Corporate Staff Section
Managing Executive Officer	Wataru Kato	In charge of Next Generation Business
Managing Executive Officer	Takayuki Yamane	Chief Operating Officer, Corporate Staff Section, Corporate Planning
Managing Executive Officer	Hiroshi Uemura	In charge of Western Japan
Managing Executive Officer	Ken Yamaguchi	Chief Operating Officer, Corporate Staff Section, Corporate Administration, Legal, Human Resources & Compliance, (Concurrently) Chief Human Resource Officer, (Concurrently) Chief Health Officer
Managing Executive Officer	Tsutomu Yamaguchi	In charge of National, 2
Managing Executive Officer	Tatsuhisa Yokoyama	In charge of Eastern Japan
Managing Executive Officer	Tatsuya Sato	In charge of National, 1
Managing Executive Officer	Tomoharu Ishizaki	In charge of IT/Digital Strategy, (Concurrently) Division COO, Digital Solutions Division, (Concurrently) Chief Information Officer
Managing Executive Officer	Hiroshi Koyama	In charge of Marketing Development, (Concurrently) Division COO, Marketing Development Division
Executive Officer	Yasushi Watanabe	Senior Assistant to Chief Operating Officer, Corporate Staff Section, Corporate Administration & Governance
Executive Officer	Ichiro Satsuka	General Manager, Kyushu Branch
Executive Officer	Toshiyuki Suganuma	General Manager, Kansai Branch

Executive Officer	Noboru Tachime	Deputy in charge of Products, Products & Code Master Control
Executive Officer	Katsuo Uchiyama	General Manager, Hokkaido Branch
Executive Officer	Yoji Miyamura	Division COO, SCM Support Division
Executive Officer	Yuichiro Nakamura	In charge of CVS, (Concurrently) Division COO, CVS Division
Executive Officer	Takuro Kubota	Division COO, National Distribution Division
Executive Officer	Takashi Ito	General Manager, Tokyo Metropolitan Area Branch
Executive Officer	Koji Kotani	Seconded to Best Logistics Partners Inc. (President and Representative Director)
Executive Officer	Yoshifumi Kobayashi	Division COO, NC Division
Executive Officer	Yutaka Shiraishi	Division COO, Logistics Division
Executive Officer	Hiroataka Nishiyama	Senior Assistant to Chief Operating Officer, Corporate Staff Section, (Concurrently) Group Manager, Corporate Administration Office

(In order of rank. Non-officer executive officers are listed in order of date of birth)