



June 4, 2026

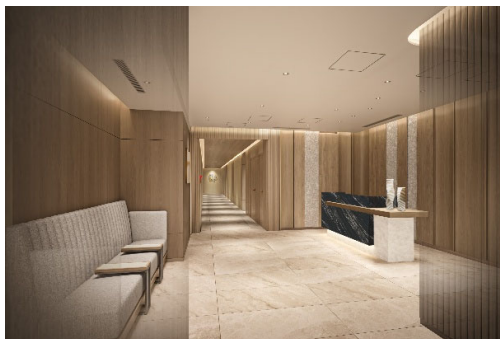
FOR IMMEDIATE RELEASE

Company name	Resorttrust, Inc.
Representative	Ariyoshi Fushimi, CEO and Representative Director
Code	4681, Prime of Tokyo Stock Exchange and Premier of Nagoya Stock Exchanges

Membership-based Comprehensive Medical Club "the GRAND HIMEDIC Club"
Launches "HIMEDIC Yokohama Bay Course" Service

– Medical Screenings Focusing on "Pre-Primary Prevention" at BASEGATE YOKOHAMA
 KANNAI Clinic –

HIMEDIC Inc. (Headquarters: Shibuya-ku, Tokyo; President and Representative Director: Ariyoshi Fushimi; hereinafter "HIMEDIC"), a wholly-owned subsidiary of Resorttrust, Inc. (Head Office: Naka-ku, Nagoya, Aichi Prefecture; CEO and Representative Director: Ariyoshi Fushimi; hereinafter "Resorttrust") that manages the medical business of the Resorttrust Group and operates the membership-based comprehensive medical club "GRAND HIMEDIC Club," will commence medical screenings as its 11th course, the "HIMEDIC Yokohama Bay Course" (hereinafter the "Course"), on June 5, 2026, at its partner medical facility, BASEGATE YOKOHAMA KANNAI Clinic.



Rendering of the HIMEDIC Yokohama Bay Course Reception

Based on the philosophy that preventing the onset of illnesses directly links to nursing care prevention (building a body that does not require long-term care), the GRAND HIMEDIC Club has been offering Well-being-oriented Screenings^{*1} since 2024. These screenings focus on both early detection and early treatment of serious diseases (secondary prevention) and health promotion, lifestyle improvement, and disease prevention (primary prevention).

This new Course will take preventive medicine a step further by introducing "Pre-Primary Prevention" (Zero-Phase Prevention), which focuses on eliminating the root causes of disease causes and creating an environment conducive to achieving good health. In addition to conventional screenings offered by the GRAND HIMEDIC Club, it will collaborate with universities, corporations and medical institutions with deep ties to Yokohama to provide preventive healthcare that focuses on sleep and women's medicine.

In today's super-aged society, there is a growing demand not only for early detection, diagnosis and treatment of diseases, but also for achieving longevity^{*2}—maintaining a high quality of life and functional capability rather than simply extending lifespan. As a pioneer in preventive medicine, the GRAND HIMEDIC Club has entered a new phase, accelerating evidence-based approaches and medical digital transformation (DX) to contribute to extending healthy life expectancy and advancing women's medicine in Japan. HIMEDIC will launch this new challenge in Yokohama to build a society where no one loses their loved ones to preventable illnesses.

*1 Screenings incorporating well-being, a concept that signifies a state of complete physical, mental and social fulfillment, and is garnering attention as vital for improving personal happiness and corporate growth. Currently available at the HIMEDIC Osaka Nakanoshima Course and HIMEDIC Midtown East Course.

*2 A concept aimed at extending healthy life expectancy and maintaining high-quality daily life functions.

■ Three Features of the HIMEDIC Yokohama Bay Course

[Feature 1] Pre-Primary Prevention Focused on "Sleep"

Positioning sleep, which is closely linked to the onset of various illnesses, as a key health metric, a collaborative cohort study on the relationship between sleep and diseases (hereinafter the "Study") will be conducted by three parties: Wellbeing Yokohama General Incorporated Association (Headquarters: Yokohama, Kanagawa Prefecture; Representative Director: Sachio Kuribayashi), which is the operating trustee of BASEGATE YOKOHAMA KANNAI Clinic; Yokohama City University (Headquarters: Yokohama, Kanagawa Prefecture; President: Yoshihiro Ishikawa); and SOXAI, Inc. (Headquarters: Yokohama, Kanagawa Prefecture; President and CEO: Tatsuhiko Watanabe; hereinafter "SOXAI"). The Study is aimed at early prediction of illnesses and clarify their developmental mechanisms by integrating sleep data collected via SOXAI's smart rings^{*3} with the screening results of the Course to conduct exploratory research for scientifically verifying changes and warning signs that appear prior to disease onset.

Through the following services, the Course will visualize sleep and continue to provide health support, aiming to build a body that is highly resistant to illness and does not require nursing care. ^{*4}

1. Sleep condition feedback (individualized reports based on sleep data collected via the smart ring^{*3})
2. Establishment of a dedicated sleep consultation desk
3. Referrals to affiliated medical institutions specializing in sleep medicine



SOXAI Smart Ring (*3) "SOXAI RING2"

*3 A ring-shaped wearable device. Worn on the fingertip, it automatically measures and analyzes healthcare data such as heart rate, sleep quality, and activity levels 24 hours a day. The SOXAI RING is Japan's only domestically produced smart ring.

*4 Eligible for individuals who consent to participate in the Study and who continue to undergo screenings on this Course.

[Feature 2] Enhancing Women's Medicine via Hormone Management × Medical DX & Femtech^{*5}

Fluctuations in female hormone secretion levels have a significant impact on a woman's susceptibility to certain diseases. By properly understanding and managing these hormonal changes, this Course is aimed at reducing the risk of developing conditions related to female hormones, such as osteoporosis, arteriosclerosis, myocardial infarction, stroke and dementia.

In addition to screening for female hormones and hormone-related disorders, the Course will utilize medical DX and Femtech^{*5}—including online medical consultations and chronological data management—to actively prevent examinees from developing illnesses prevalent in women.

If results from female hormone or osteoporosis screenings indicate a need for follow-up monitoring or treatment, examinees can smoothly transition to outpatient care and treatment at its partner facility, BASEGATE YOKOHAMA KANNAI Clinic.

^{*5} Products and services that utilize technology to address and solve women's health challenges.

[Feature 3] Driving Medical DX Forward

Supported by Well-Compass, Inc., a joint venture with DeNA Co., Ltd. (Headquarters: Shibuya-ku, Tokyo; President and CEO: Shingo Okamura), the Course will introduce a system that allows individuals to view their historical screening data across different HIMEDIC screening facilities.^{*6} Additionally, it will implement a viewer system to automatically flag items requiring attention and enable members to intuitively track improvements or declines compared to past data. This allows the Course, which is offered by the membership-based comprehensive medical club, to stand close by each member and support the high-quality medical services delivered by its partner medical facilities.

Furthermore, HIMEDIC will leverage automation and data utilization to enhance productivity, fostering an environment where its staff can focus more deeply on its members. Moving forward, the company will strive to deliver even higher quality services by integrating AI and other advanced technologies.

^{*6} Excluding the HIMEDIC University of Tokyo Hospital Course and the HIMEDIC Kyoto University Hospital Course.

HIMEDIC Midtown East Course Overview

【Membership Contract Price】

Type of Membership Plan	Details	Membership Price (Initial fee)	Monthly fee
HIMEDIC Yokohama Bay Course Well-being Premium	Total (including tax)	3,575,000	53,900
	Base Price	3,250,000	49,000
	Consumption Tax	325,000	4,900

Membership Term 15 years Number of Members 3,360 members

【Service details】

●Medical Screenings*7: Multifaceted screenings that identify future care risks such as cancer, heart disease, cerebrovascular disease, and bone/joint conditions

<Main Contents of Medical Examination> *Underlined scans are only for women.

- PET scans •MRI scans •CT scans(To be performed using multi-position CT) •Mammogram
- X-ray bone density tests (lumbar spine and femur)
- Ultrasound scans (carotid artery, thyroid gland, breast, heart, abdominal)
- Blood tests (including hormone tests, tumor markers, bone turnover markers)
- Electrocardiography • Blood pressure pulse wave scans
- Gynecological scans (cervical cytological diagnosis, transluminal ultrasound scanning, HPV test)
- Upper gastrointestinal tract endoscopy
- Brain checkups (memory task, brain imaging health assessment) •Body composition tests
- Explanation of overall results, etc.

●Medical Affiliations & Support:

- Referral to a medical institution when abnormalities are found in the medical screenings
- Medical consultations with the Club doctors
- An appointment-only special outpatient clinic (Tokyo, Nagoya, Osaka)
- Regular follow-ups by a medical concierge
- Member-participatory improvement support programs (Planned / Additional fees may apply)
- Health support using an app (scheduled)

*7 Medical screenings are provided by affiliated medical facilities.

【Partner Medical Facility Performing Medical Screenings】

Medical Screenings facilities: BASEGATE YOKOHAMA KANNAI Clinic

Location: 1-1-1 Minatomachi, Naka-ku, Yokohama City, Kanagawa, Japan

Total floor area: 1,843㎡

Equipment (planned): PET/CT, 3.0-Tesla MRI scans, multi-position CT, X-ray bone-density measuring equipment,3D mammogram machine, ultrasound examination equipment, endoscopy examination equipment

Contracted operating corporation: Well-being Yokohama Clinic

【Map】



【Clinic Physician Profiles】

Clinic Director: Tomoaki Ishigami

<Biography> Graduated from Yokohama City University School of Medicine; Specially Appointed Professor at Yokohama City University

Director of Women's Medical Center: Remi Yoshikata

<Biography> Graduated from Tokyo Women's Medical University School of Medicine; GRAND HIMEDIC Club doctor_

About HIMEDIC INC.

HIMEDIC operates the "Grand HIMEDIC Club," a membership-based comprehensive medical club. Through its partner medical facilities, it became the first in Japan to offer cancer screenings utilizing PET (*1) in 1994. Since then, it has provided meticulous services tailored to each individual, including the introduction of advanced diagnostic imaging equipment, thorough support when abnormalities are detected during checkups, and a nationwide referral network. With the opening of the HIMEDIC Yokohama Bay Course, the club now operates 14 locations and 11 courses across Tokyo, Kanagawa, Yamanashi, Nagoya, Kyoto, and Osaka, supporting the health of approximately 36,000 members (*2).

Furthermore, HIMEDIC operates a total of 18 senior residences (nursing homes with care services and serviced housing for the elderly) in the Kanto, Chubu, and Kinki areas. In November 2025, leveraging its expertise in preventive medicine, the company launched a new brand, "HIMEDIC Residence The Garden," which integrates medical care, nursing care, and hospitality. It practices "HIMEDIC Care," a proprietary care model focusing on "exercise, communication, diet, and sleep," alongside evidence-based initiatives for the prevention and retardation of dementia.

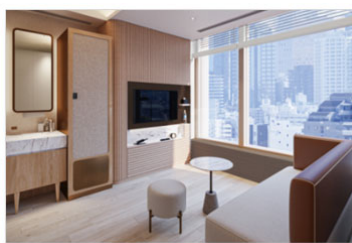
Under the brand identity "Together for a Wonderful Life" and the slogan "Contributing to Healthy Longevity and Personal Well-being in the 100-Year Life Era," the company consistently proposes and implements advanced services in the field of preventive medicine, committing to continuous value creation and further growth.

*1 Positron Emission Tomography

*2 As of the end of March 2026



BASEGATE YOKOHAMA KANNAI
- Exterior



Private Room Image



PET Examination Area
- Entrance Image



X-ray Bone Densitometer



Multi-position CT (Standing position)
Image