

March 31, 2026

Core Concept Technologies Inc.

Securities code: 4371 (Growth Market of TSE)

Refurbishment of the Company-wide Warehouse Management System by Senko, a Company with Over 100 Years of History **Promoted by CCT's Hands-on Support**

Core Concept Technologies Inc. (headquartered in Toshima-ku, Tokyo; Representative Director, President and CEO: Takeshi Kaneko; hereinafter referred to as “CCT”), which offers support for DX, has joined the “DX Project for Standardizing Business Operations” implemented by Senko Co., Ltd. (headquartered in Kita-ku, Osaka City; President and Representative Director: Noboru Ogoshi; hereinafter referred to as “Senko”), a leading general logistics company founded in 1916, as a hands-on project management office (PMO). In the large-scale complex project for refurbishing the warehouse management system (WMS) that has been optimized individually for each client for over 20 years, CCT has offered hands-on support for verbalizing knowledge on site and coordinating related staff as “an entity standing by each employee.” By establishing visualization, CCT has made it possible to solve problems much more swiftly.



From left: Mr. Satoshi Yoshida, Head of DX Promotion Department, Business Strategy Promotion Division, Senko Co., Ltd.
Mr. Tsutomu Arase, Head of Logistics DX Department, Enterprise SI Division, Core Concept Technologies Inc.

*The position titles as of March 2026 are indicated.

■Background

Senko offers a broad range of logistics services, including trunk transport, joint delivery, and third-party logistics, as a general logistics company boasting over 100 years of history in order to support diverse supply chains in each industry.

On the other hand, it has been over 20 years since the warehouse management system (WMS), which was developed in-house and has been operated in response to clients' requests, was adopted.

Development and maintenance costs increased as it was necessary to deal with requests from individual clients, and the system no longer kept abreast of the technological environment, so it was imperative to refurbish the system.

A large-scale DX project was launched for the purpose of solving these problems and standardizing business operations, but it was difficult to grasp the progress and problems, because many people were involved and a broad range of fields were targeted.

■Details and effects of CCT’s Support

Our Company has been supporting DX projects while putting importance on the understanding of on-site workers, mainly in the manufacturing and construction industries. In this project, we participated in the project as a PMO giving hands-on support, by applying our know-how to the logistics field.

Description of major support

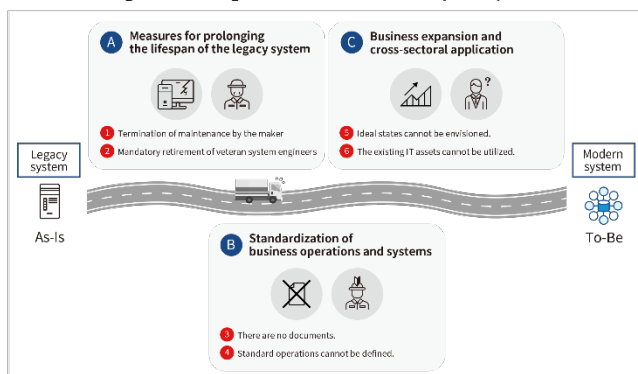
- Summarization of milestones for progress management in the entire project
- Visualization of issues and risks, and verbalization of discussions
- Support for communication serving as a bridge between Senko and its information systems subsidiary
- Definition of requirements and standardization of discussion processes

We make the large-scale project, which tends to become a black box, transparent, making it possible to solve issues more swiftly.

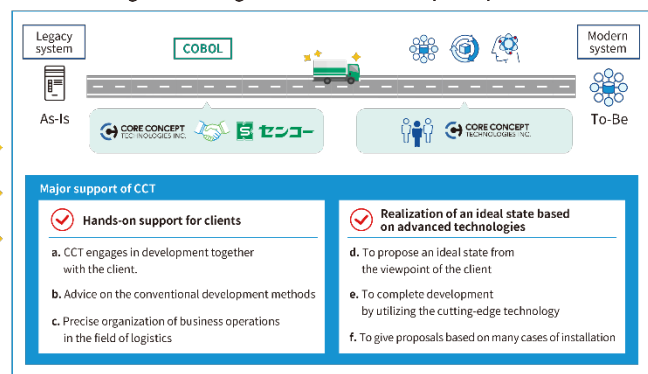
Effects

- It is now common to engage in communication based on quantitative information.
- The status of the project was visualized, fostering a common understanding among the personnel involved.
- On-site workers and the PMO share issues from the same standpoint, realizing a smooth improvement cycle.
- Cooperation between Senko and its information system has been cemented.

Schematic diagram showing the situation before the participation of CCT



Schematic diagram showing the situation after the participation of CCT



■Voice of the client (Mr. Satoshi Yoshida, Head of DX Promotion Department, Business Strategy Promotion Division, Senko Co., Ltd.)

We asked CCT to participate in the project, summarize the progress, and fully visualize what was going on. The part of the large-scale project, which tends to become a black box, was made transparent, and it became possible to solve issues much more swiftly.

In addition, CCT reflected the contents of interviews with our employees from the same viewpoint in measures without fail, winning the trust of on-site workers. CCT is “an entity standing by each employee,” and hands-on support has produced good effects on the project itself.

■Future outlook

Senko will improve the quality of business operations while utilizing the knowledge of veteran employees through the standardization of business operations based on DX and offer more value to the entire supply chain. Our Company will keep contributing to the medium/long-term growth of enterprises and the creation of social value by offering support for DX in a hands-on manner.

▼ For details on this case, please click here.
<https://www.cct-inc.co.jp/solution/case/9019/>

▼ For the interview in our owned media “Koto Online,” please click here.

Employees who have exercised their ingenuity on site are the “treasures of the company,” and Senko’s “way of DX.”

<https://www.cct-inc.co.jp/koto-online/archives/725>

■**About Senko Co., Ltd.**

Senko started business in 1916 and currently operates the core business of distributing goods in the Senko Group, which is composed of about 200 companies. Senko offers diverse services, including warehousing, transportation by rail, logistics in factories, maritime transportation, and international distribution in addition to truck transportation through the nationwide network, to support the supply chains in a broad range of industries, including food products, chemical goods, and daily necessities. Its forte is the comprehensive system for inventory management, distribution processing, and transportation/delivery of goods. In recent years, the company engages in the sophistication of the supply chain in the entire corporate group, by promoting logistics DX based on robotics and AI.

▼**Click here to access the website.**

<https://www.senko.co.jp/>

■**About Core Concept Technologies Inc.**

Our Company offers support for DX with a focus on the manufacturing, construction, and logistics industries, and support for staffing of IT personnel which enables us to deal with a broad range of industries. Utilizing our DX development base “Orizuru” and the extensive business partner network “Ohgi,” we closely support customers from the definition of ideal state to technical verification, system construction, operation and maintenance, and in-house production in a comprehensive manner.

For inquiries about this release

Staff in charge of PR and IR of Core Concept Technologies Inc.

E-mail: ir@cct-inc.co.jp