

December 23, 2025

For Immediate Release

Real Estate Investment Trust Securities Issuer
1-11-30 Akasaka, Minato-ku, Tokyo
CENTRAL REIT Investment Corporation
Representative: Sunao Takeda, Executive Director
(Securities Code: 3488)

Asset Management Company
MEITETSU XYMAX ASSET MANAGEMENT CO., LTD.
Representative: Sunao Takeda
Representative Director and President
Contact: Tatsuya Nakayama
Head of REIT Management Department
TEL: +81-3-5544-6880

Notice Concerning Changes in Organization and Key Personnel at the Asset Management Company

MEITETSU XYMAX ASSET MANAGEMENT CO., LTD. (hereinafter the “Asset Management Company”), to which CENTRAL REIT Investment Corporation (hereinafter “CENTRAL REIT”) entrusts the management of its assets, hereby announces that it has resolved to implement organizational changes and changes in key personnel at the Asset Management Company, as outlined below.

1. Changes in Organization

(1) Details of the change

With the aim of establishing and strengthening the organizational foundation for the future growth of CENTRAL REIT, the Asset Management Company will transfer and consolidate, from the existing organizations (REIT Management Department and Business Administration Division) to the newly established Corporate Planning Department, the functions relating to the formulation of investment policies, numerical management, financing and fund management, public relations and investor relations activities, and the promotion of sustainability for CENTRAL REIT, whose assets are entrusted to the Asset Management Company.

(2) Date of change

January 1, 2026

*The organization charts of the Asset Management Company before and after the changes are shown in Attachment 1 and 2, and the duties of the newly established organization are described in Attachment 3, respectively.

2. Change of Key Personnel (as of January 1, 2026)

Change		Name
Appointment	Head of Corporate Planning Department	Eisuke Makita(Note)
Leaving office	Head of Business Administration Division	Keiko Kato

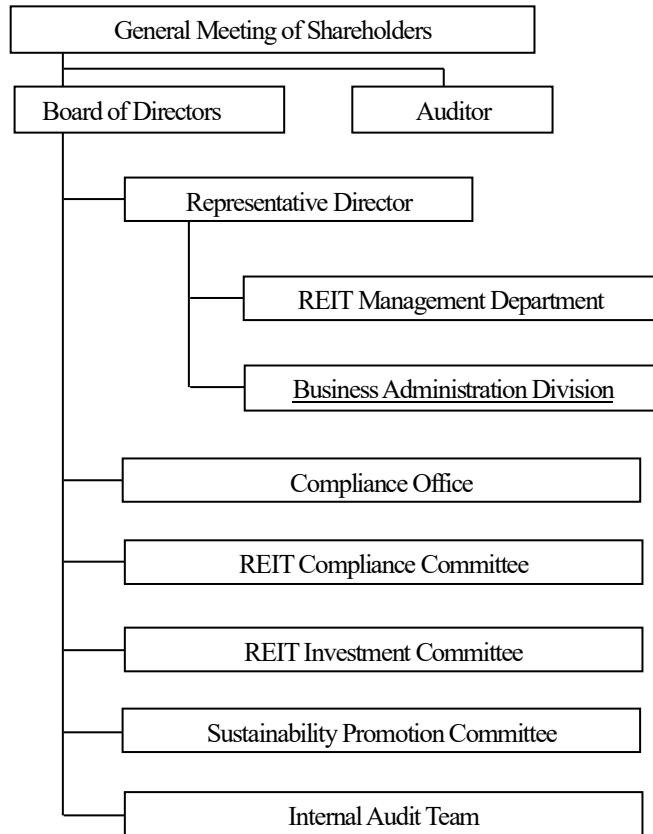
* Note The profiles of the newly appointed key personnel are in attachment 3.

With respect to this matter, all necessary procedures, including notifications, will be carried out in accordance with the provisions of the Financial Instruments and Exchange Act, and other applicable laws and regulations.

CENTRAL REIT website address: <https://xymaxreit.co.jp/en/index.html>

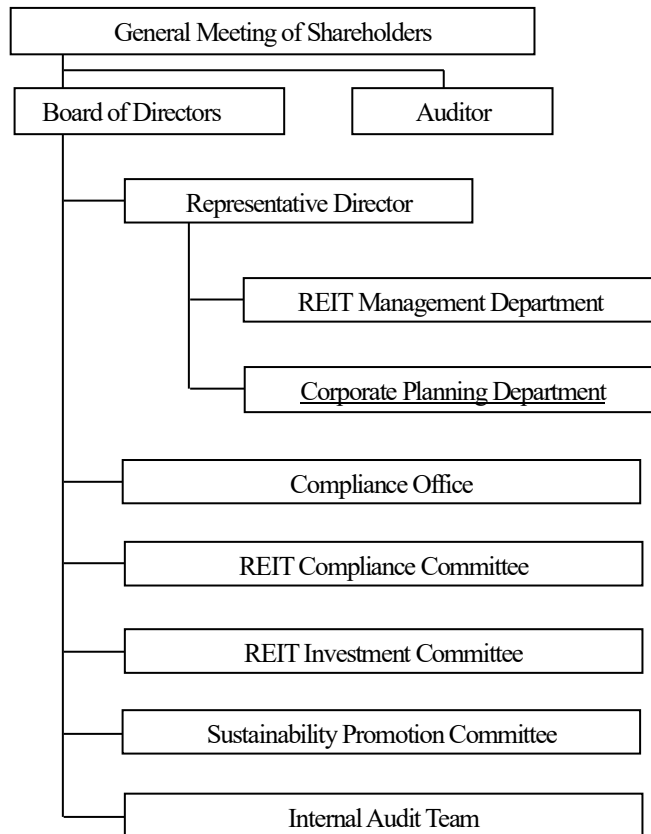
Organizational Chart of the Asset Management Company

Prior to the Change (Underlined portions indicate the changes)



Organizational Chart of the Asset Management Company

After the Change (Underlined portions indicate the changes)



Outline of Principal Duties (Newly Established Organization Only)

Division	Description of Duties
Corporate Planning Department	<p>I. General investment management operations for CENTRAL REIT</p> <p>i. Formulation of guidelines and other investment policies of CENTRAL REIT</p> <p>ii. Numerical management relating to the operations of CENTRAL REIT</p> <p>iii. Financing and fund management of CENTRAL REIT</p> <p>iv. Public relations and investor relations activities of CENTRAL REIT</p> <p>v. Promotion of sustainability initiatives of CENTRAL REIT</p> <p>II. Administrative operations relating to CENTRAL REIT</p> <p>III. Preparation and retention of books, records, reports, and other related documents</p> <p>IV. Disclosure activities (excluding statutory disclosure by CENTRAL REIT)</p> <p>V. Information systems management</p> <p>VI. Handling of complaints and inquiries, and related record management</p> <p>VII. Internal management (accounting, general affairs and other organization-wide management functions)</p> <p>VIII. Support services for meetings of the board of directors and committees</p> <p>IX. Customer management and customer data management</p> <p>X. Corporate information management</p> <p>XI. Other operations incidental to those set forth in items (I) through (X)</p>

Career Summary of Newly Appointed Key Personnel

Title	Name	Career Summary
Head of Corporate Planning Department	Eisuke Makita	<p>April 1997 Joined Toppan Printing Co., Ltd. (Current: TOPPAN Holdings Inc.)</p> <p>September 2002 Joined Terashima Real Estate Institute Co., Ltd.</p> <p>March 2006 Joined MORI TRUST CO., LTD.</p> <p>March 2006 Seconded to Mori Trust Asset Management Co., Ltd.</p> <p>September 2013 Joined Solar Frontier K.K.</p> <p>January 2015 Joined DAIWA REAL ESTATE APPRAISAL CO., LTD.</p> <p>August 2016 Joined ORIX Life Insurance Corporation</p> <p>April 2021 Joined Tokyo Tatemono Investment Advisors Co., Ltd.</p> <p>April 2025 Joined MEITETSU CITY DESIGN CO., LTD.</p> <p>October 2025 Seconded to MEITETSU XYMAX ASSET MANAGEMENT CO., LTD. General Manager of REIT Management Department (present)</p> <p>January 2026 Head of Corporate Planning Department of CENTRAL REIT (to be appointed)</p>

-End-