

January 20, 2026
Nittetsu Mining Co., Ltd.

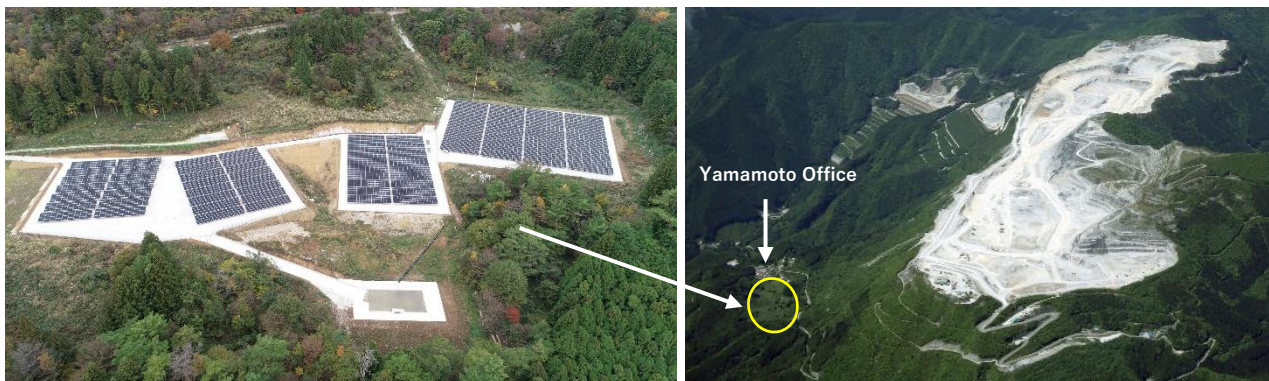
Commencement of Operations at a 1,500 kW-Class Solar Power Plant for On-Site Self-Consumption at the Torigatayama Quarry Complex, One of Japan's Largest Limestone Mines

Nittetsu Mining Co., Ltd. commenced the operation of the "Torigatayama Quarry Complex Yamamoto Office Solar Power Plant Facility (hereinafter referred to as the Torigatayama Yamamoto Power Plant)" on January 14, 2026. The mining site of the Torigatayama Quarry Complex is located in Niyodogawa-cho, Agawa-gun, Kochi Prefecture, and boasts the largest limestone production volume in Japan. The Torigatayama Yamamoto Power Plant is a newly established power generation facility that effectively utilizes an adjacent mine site within the complex.

As part of its initiatives to address climate change, the Group has set a target of "a reduction of at least 38% in domestic energy-derived CO₂ emissions compared to FY2013 level by FY2030." The electricity generated by the "Torigatayama Yamamoto Power Plant," which has recently commenced operations, will be consumed entirely on-site. This is expected to cover approximately 6% of the site's annual electricity consumption with renewable energy from this facility and to reduce annual CO₂ emissions by approximately 1,000 tons*.

*Calculated based on the emission factor for purchased electricity at the Torigatayama Quarry Complex (FY2024 reporting) under the "Act on Promotion of Global Warming Countermeasures".

Under the Management Policy that "The Nittetsu Mining Group aims to contribute to the creation of a prosperous society in the future and to be a company where each and every employee can work with high motivation and pride", the Group views its response to a changing business environment as contributing to the resolution of social issues and the realization of its Management Policy, and is actively promoting sustainability management. Going forward, as part of its initiatives to address climate change, the Group will continue to promote the development of renewable energy through the effective use of company-owned land and buildings.

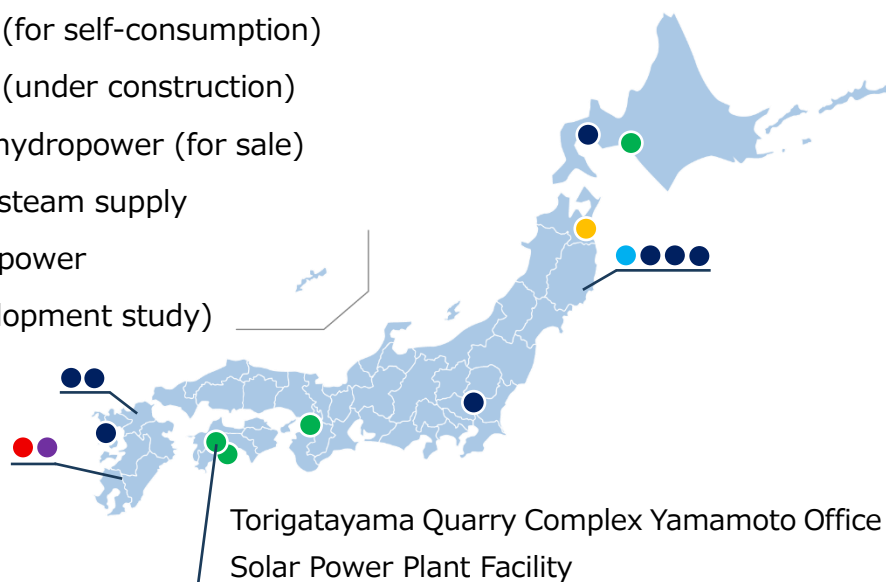


【Overview of Torigatayama Quarry Complex Yamamoto Office Solar Power Plant Facility】

- (1) Land area: Approx. 14,320 m²
- (2) Power generation capacity: 1,498.5 kW
- (3) Construction company: Shikoku Hitachi Co., Ltd., Kochi Branch

【Installation Status of Renewable Energy Power Generation Facilities of the Group】

- Solar power (for sale)
- Solar power (for self-consumption)
- Solar power (under construction)
- Small-scale hydropower (for sale)
- Geothermal steam supply
- Geothermal power
(under development study)



【Related Information】

Nittetsu Mining Co., Ltd. Website (Responding to Climate Change)

https://www.nittetsukou.co.jp/eng/sustainability/environment/climate_change.html



【Contact】

Sustainability Promotion Section, Corporate Planning Department
(TEL +81-3-5962-9766)

Note : This document has been translated from the Japanese original for reference purposes only. In the event of any discrepancy between this translated document and the Japanese original, the original shall prevail.